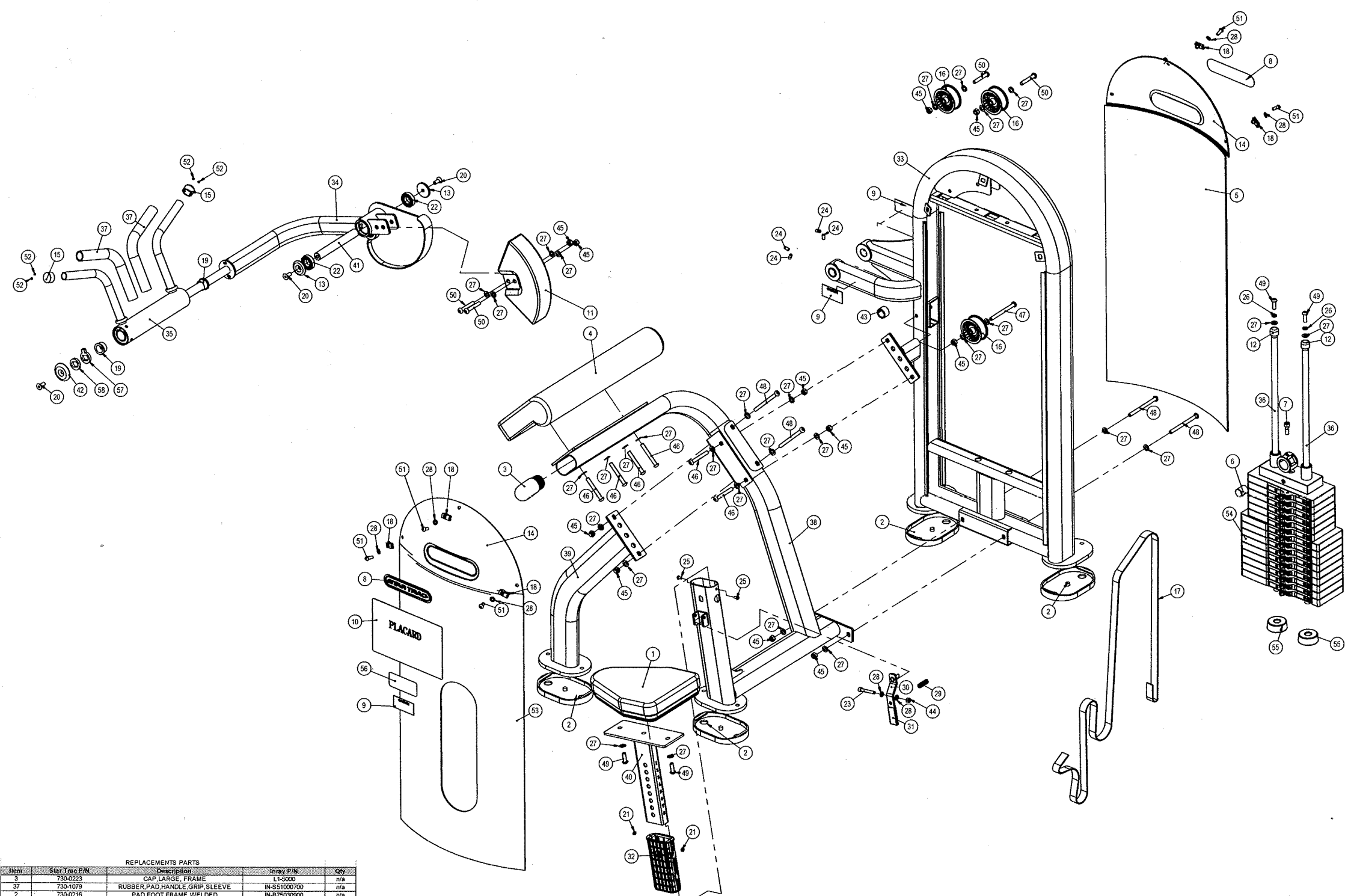


REVISION HISTORY			
REV	DATE	DESCRIPTION	ECO BY
A	11/02/05	PRODUCTION RELEASE	11956 AK



ITEM NO.	STARTRAC P/N	INRAY P/N	DESCRIPTION	QTY.
1	730-0194	IN-B72012000	PAD, SEAT, IN-B7201	1
2	730-0216	IN-B75030900	PAD, FOOT FRAME, WELDED	4
3	730-0223	L1-5000	CAP, LARGE, FRAME	1
4	730-0232	IN-S51102600	PAD, ARM REST, IN-S5100	1
5	730-0233	IN-S10121500	SHROUD, REAR, IN-S5100	1
6	730-0236	IN-S10121700	PIN, BELT ANCHOR	2
7	730-0237	GB70M10-30A2-70NL	SCREW, M10x30, SHS, SS	2
8	730-0383	STARTRAC1	LOGO, STARTRAC	2
9	730-0386	CAUTION	LABEL, CAUTION, PINCH POINT	3
10	730-0406	TZZS55100	PLACARD, INSTRUCTION, IN-S5100	1
11	730-0548	IN-S51102300	COUNTERBALANCE, IN-S5110	1
12	730-0565	IT80129500	CAP, END, HANDLE	2
13	730-0656	IN-S51102100	CAP, 50MM OD	2
14	730-0702	IN-D10132800	SHROUD, UPPER	2
15	730-0704	IN-B72001200	CAP, 25MM, ALUMINUM	2
16	730-0721	IN-S51101000	PULLEY, 75MM	3
17	730-0778	IN-S10112000	BELT	1
18	730-0845	IN-S21004800	SHROUD, MOUNTING, U-STYLE, CLIP	6
19	730-0858	M02502000	BUSHING, 1.0, BRONZE	2
20	730-0870	CNLM10-25A2-70	SCREW, M10x25, FHM, HK, SS	3
21	730-0885	GB41M6A2-70	NUT, M6, JAM, HEX, SS	2
22	730-0886	GB6005-22	BALL BEARING, 25MM ID, 47MM OD	2
23	730-0892	GB70M8-55A2-70	SCREW, M8x55, SHS, SS	1
24	730-0896	GB77M8-16A2-70	SCREW, M8x16, SET, SS	4
25	730-0899	GB818M6-12A2-70	SCREW, M6x12, BHC, SS	2
26	730-0907	GB9310D12	WASHER, M10, SPLIT LOCK, SS	2
27	730-0908	GB9510A2-70	WASHER, M8, BELLEVILLE, SS	30
28	730-0910	GB958A2-70	WASHER, M6, BELLEVILLE, SS	8
29	730-0911	HF1642303	ADJUSTMENT, HANDLE, COMPRESSION SPING	1
30	730-0930	IN-B72010800	ASSY, EXTENSION, ADJUSTMENT, HANDLE	1
31	730-0935	IN-B72011400	ASSY, ADJUSTMENT, HANDLE, END, SLEEVE	1
32	730-0936	IN-B72011700	ASSY, TUBE, INSERT, SLEEVE	2
33	730-1075	IN-S51000100	WEIGHT STACK, FRAME	1
34	730-1076	IN-S51000300-X	LEVERAGE ARM, IN-S5100	1
35	730-1077	IN-S51000400	ASSY, PIVOT, HANDLE	1
36	730-1078	IN-S51000600	WEIGHT STACK, GUIDE RAIL	2
37	730-1079	IN-S51000700	RUBBER, PAD, HANDLE, GRIP, SLEEVE	2
38	730-1081	IN-S51100200	ASSY, MAIN FRAME	1
39	730-1082	IN-S51100300	ASSY, MAIN FRAME, LEG	1
40	730-1083	IN-S51100600	POST, ADJUSTMENT, EXTENSION, SEAT	1
41	730-1084	IN-S51102000	SHAFT, 25MM X 192	1
42	730-1085	IN-S51102200	CAP, END TUBE, S5110	1
43	730-1087	IN-S51102400	PAD, RUBBER BUMPER, M47X68	1
44	730-1103	NM8A2-70	NUT, M8, NYLON PATCH, SS	1
45	730-1104	NM10A2-70	NUT, M10, NYLON PATCH, SS	11
46	730-1109	PNLM10-80A2-70	SCREW, M10x80, BH, SS	6
47	730-1110	PNLM10-115A2-70	SCREW, M10x115, BHC, SS	1
48	730-1112	PNLM10-130A2-70	SCREW, M10x130, BH, SS	4
49	730-1116	PNLM10-30A2-70	SCREW, M10, BHC, HK, SS	4
50	730-1122	PNLM10-63A2-70	SCREW, M10x63, BHC, SS	4
51	730-1138	PNLM8-20A2-70	SCREW, M8x20, BHC, SS	6
52	730-1155	YZGB7710-32x3 2D52	SCREW, 10-32X3 2, SET	4
53	730-1335	730-1335	SHROUD, LNL, S5100	1
54	730-1399	730-1399	WSA-LNL, 180LB, 15H	1
55	730-1448	IT80023000	BUMPER, STACK, 25.4MM	2
56	730-1491	730-1491	LABEL INSTRUCTIONS, LOCK N LOAD	1
57	730-1544	730-1544	WASHER, BICEP/TRICEP, KEYED, LOCK, 7.2MM THICK	1
58	730-1545	730-1545	WASHER, BICEP/TRICEP, KEYED, FLAT, 7.2MM THICK	1

Item	Star Trac P/N	Description	Inray P/N	Qty
3	730-0223	CAP, LARGE, FRAME	L1-5000	n/a
37	730-1079	RUBBER, PAD, HANDLE, GRIP, SLEEVE	IN-S51000700	n/a
2	730-0216	PAD, FOOT FRAME, WELDED	IN-B75030900	n/a
1	730-0194	PAD, SEAT, IN-B7201	IN-B72012000	n/a
4	730-0232	PAD, ARM REST, IN-S5100	IN-S51102600	n/a
5	730-0233	SHROUD, REAR, IN-S5100	IN-S10121500	n/a
53	730-1335	SHROUD, LNL, S5100	730-1335	n/a
6	730-0236	PIN, BELT ANCHOR	IN-S10121700	n/a
42	730-0159	KIT, END CAP, S5100	GB70M10-30A2-70	n/a
			IN-S51102200	1
			CNLM10-25A2-70	3
			IN-S51000300	1
			GB6005-22	1
			IN-S51102300	1
			IN-S10121700	1
			PNLM10-63A2-70	2
			GB70M10-30A2-70	1
			NM10A2-70	2
			GB9510A2-70	3
			PNLM8-20A2-70	3
			IN-S51101000	2
			PNLM10-63A2-70	2
			NM10A2-70	2
			GB9510A2-70	4
N/A	730-0188	KIT, HARDWARE, IN-R8003	N/A	N/A
			IN-S21002800	15.5FT
			IN-S10121700	2
17	730-0215	KIT, BELT REPLACEMENT	GB70M10-30A2-70	1

PRODUCTION DOCUMENT STATUS RELEASE

CLASS OF WORK	UNLESS OTHERWISE SPECIFIED DIMS ARE IN mm									
	0.5 to 3	3 to 6	6 to 30	30 to 120	120 to 400	400 to 1000	1000 to 2000	> 2000	TOLERANCES FOR MEASURE OF LENGTH ARE	
FINE	±0.05	±0.05	±0.1	±0.15	±0.2	±0.3	±0.5	---		
MEDIUM	X ±0.1	±0.1	±0.2	±0.3	±0.5	±1.2	±2	---		
COARSE	---	±0.2	±0.3	±0.5	±0.8	±1.2	±2	±3	±4	---
VERY COARSE	---	---	±0.5	±1	±1.5	±2.5	±4	±6	±8	---

CLASS OF WORK	MATERIAL
SEE BOM	FINISH FRAME COLOR: STAR TRAC SILVER (HP FULLER) UPHOLTERY COLOR: STAR TRAC GREY (SLATE)
	VENDOR: N/A

UNISEN, INC. DBA 14410 Myford Road Irvine CA 92606

DATE: 08/14/07

91L-S5100-13BSS

IN, SSS, BICEP CURL, LNL

SCALE: 1:10 SHEET 1 OF 1 SHEET SIZE: B